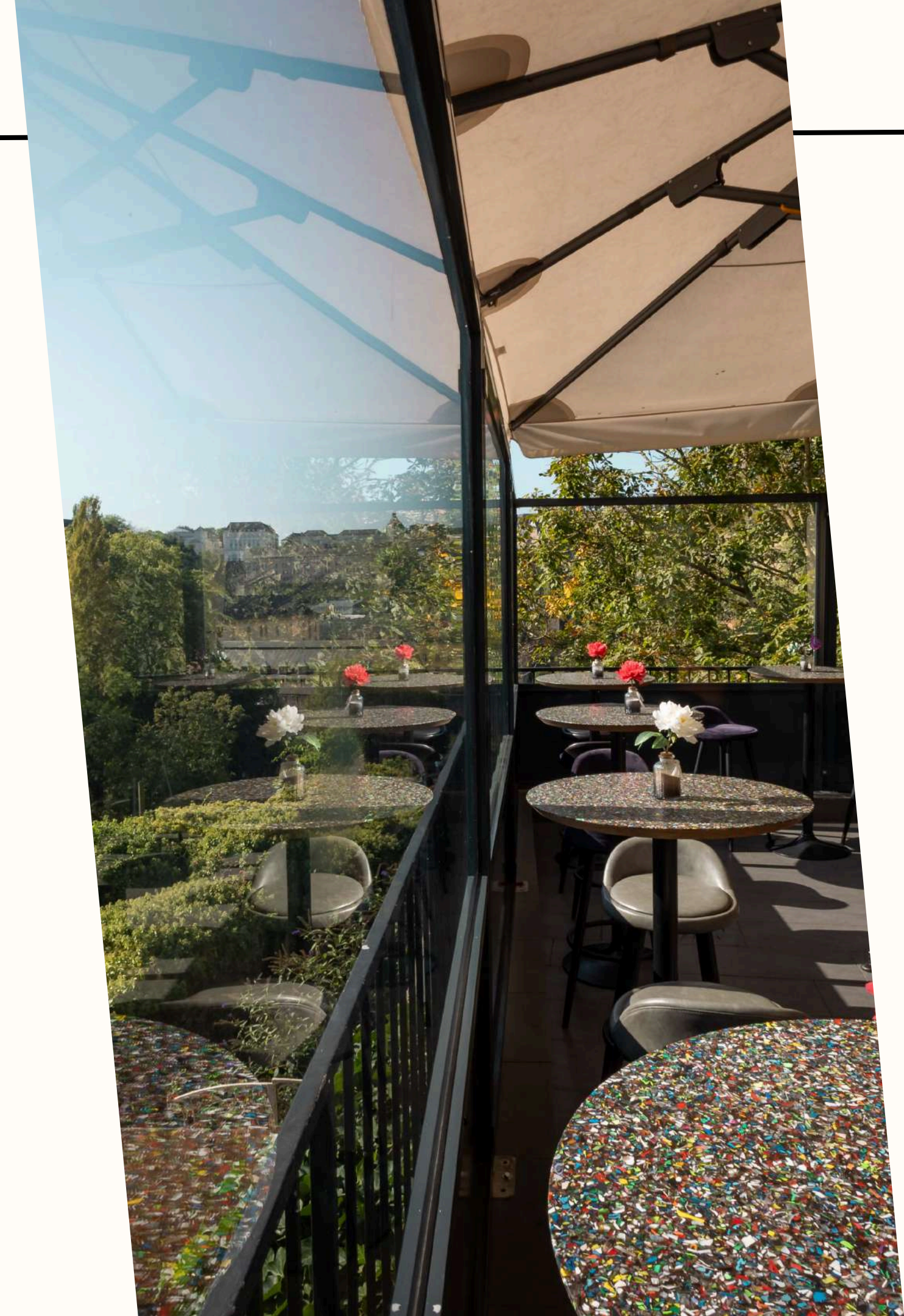


VIEWS TO SAVOR, MOMENTS TO REMEMBER



**EVENT OFFER**



# DRINKS - OPEN BAR / DRINK VOUCHERS

## BAR SERVICE

### BEERS ON TAP

Diekirch / Corona / Hoegaarden / Goose IPA /  
Leffe Blonde



### WINE & CREMANT

HOUSE WINES SELECTION

or selection to agree

- PINOT GRIS Krier Welbes (LU)
- BARBERA DALBA Altare (IT)
- PERLE DE ROSELINE ROSÉ Château Sainte Roseline (FR)
- CREMANT LE CASTEL BRUT Krier-Welbes (LU)
- CREMANT JULIE ROSÉ BRUT Krier-Welbes (LU)

### LONGDRINKS/COCKTAILS

- Gin&Tonic
- Cubalibre
- Vodka lemon
- Mules: Moscow mule / London mule
- Vodka Lemon / Redbull
- Campari soda/orange
- Mocktails & Softdrinks
- Vodka & Orange Juice (Screwdriver)

# APERITIF & DINNER

## FOOD SERVICE - WALKING APERITIF

### COLD PLATE

- Caprese Skewers
- Mushroom Bruschettas topped with Burrata (V)
- Tortilla wraps (vegan / meat)
- Vegetable Cups with Hummus (Vgn)
- Cream Cheese and Smoked Salmon Canapés
- Mini Chicken Club Sandwiches
- Canapés Cucumber Salami Cheese

### WARM PLATE

- Mini Cheese Burgers
- Falafel Rolls with Red Cabbage (Vgn)
- Shrimp tempura
- Mini Panzerotti with Cheese and Tomato (V)



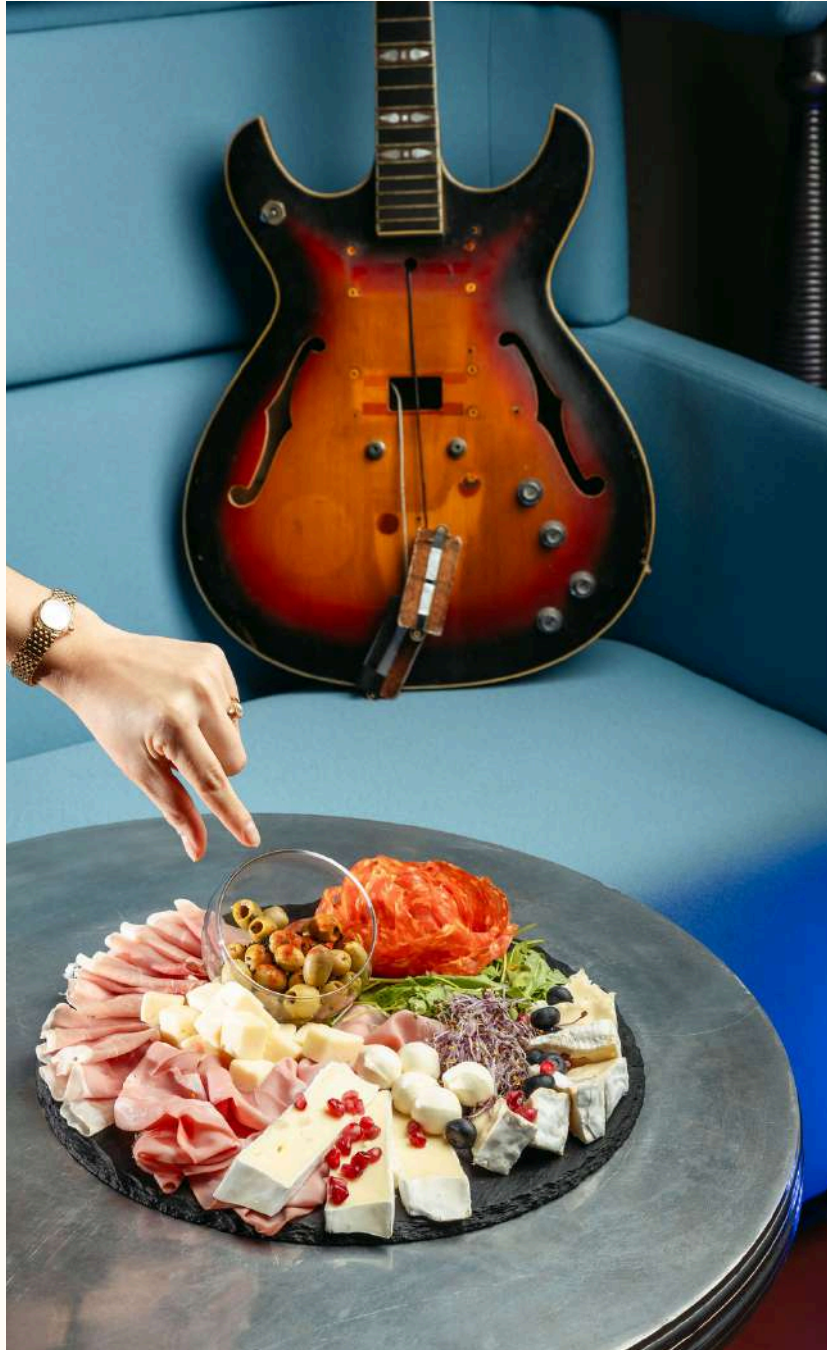
### SNACKING & SIDES

- Nachos Bowls with Salsas & Guacamole
- French Fry Cones with Home Sauce
- Olives, Hummus, Tapenades & Pita Bread
- Cheese & Charcuterie Selection

### SWEET

- Fruit Skewers
- Speculoos/Strawberry Nutella Mascarpone Cup
- Chocolate Fountain

# FOOD PRESENTATION



# TAILORED EVENT SOLUTIONS



PERSONALIZED MENUS



EVENT THEME



VENUE DECORATION

# MUSIC - HIGH-END SOUND & LIGHTING

## LIVE BAND & DJ

- Integrated high-end sound system throughout the venue
- Professional lighting & sound engineering
- Expertise in live and electronic music event organization for diverse audiences (from corporate to outdoor festival)



## LIVE MUSIC

VARIOUS BANDS AVAILABLE - TO DISCUSS

**DJ - OPEN FORMAT / HOUSE / AFROBEAT  
/REAGGETON ETC.**

"AVAILABLE ON REQUEST, WITH AN ADDITIONAL COST."

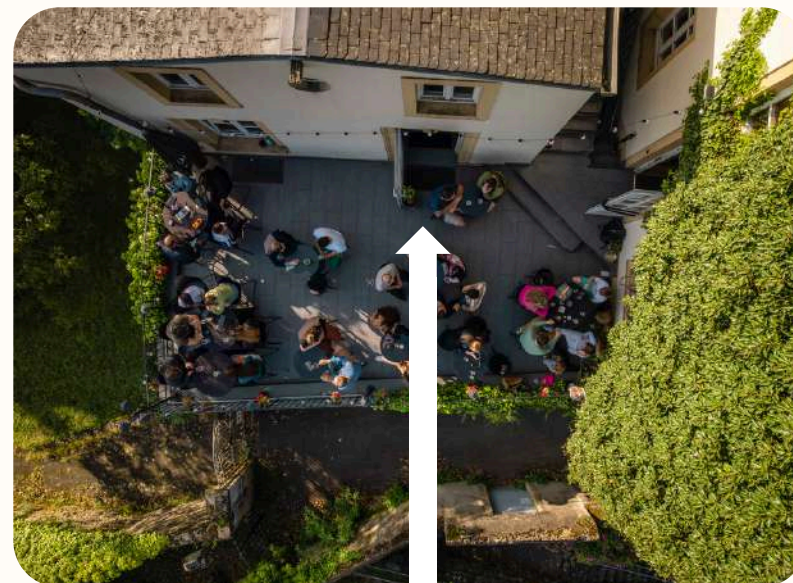
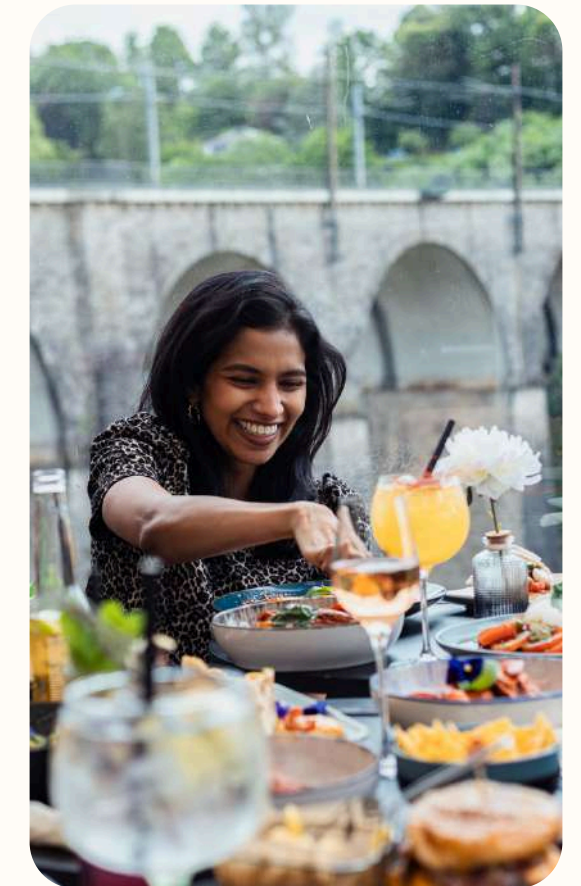


# AVAILABLE SPACES



## PANORAMA BAR & TERRACE

The main restaurant bar area located on the lower floor with access to our emblematic terrace and a capacity of up to 150 people. Terrace is covered and heated during the winter months.



## THE PALMIRA ROOM

A warm, inviting space with a separate entry to the terrace that can be adapted as required with a capacity of up to 50 people.

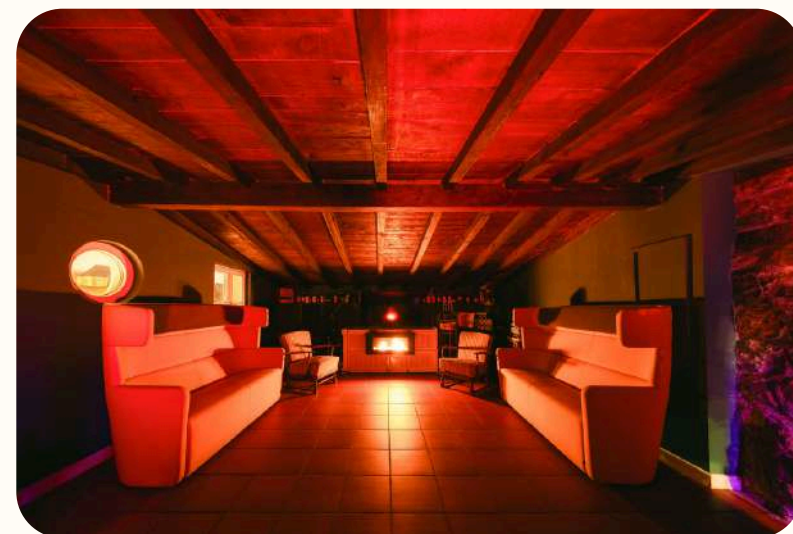


equipment: large flat screen TV, professional audio systems, microphones, sound engineering assistance, theatre lights, wifi access



## THE SUMMIT STAGE

A multi-purpose space located from the street side that can be adapted as required with its own independent bar and a separate terrace that can accomodate over 100 people.



## THE HIDEAWAY LOUNGE

A cozy room with its own audio system and a karaoke setup for up to 30 people.



equipment: large flat screen TV, professional audio systems, microphones, sound engineering assistance, theatre lights, wifi access

# AVAILABLE SPACES



# OTHER ATTRACTIONS TO CHOOSE

## MIRADOR'S KARAOKE LOUNGE ROOM

Dedicated room with karaoke set up and props.

## CUSTOM THEMED PHOTOBOOTH

Matching the theme of the event, Digital &/or prints.

## PRESENTATIONS & QUIZ SCREENS.

Audiovisual assistance for presentations, key speeches or quizzes.

## COCKTAIL ACADEMY

For pre-registered groups.



*We Appreciate Your Time and Interest!*